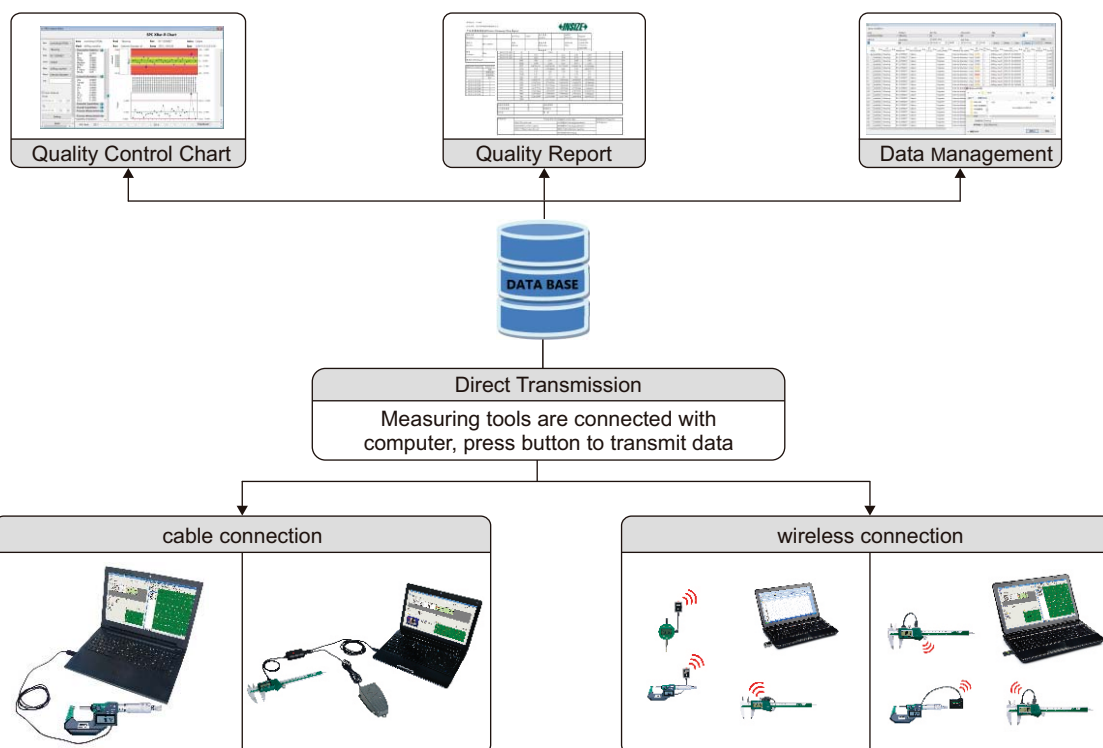
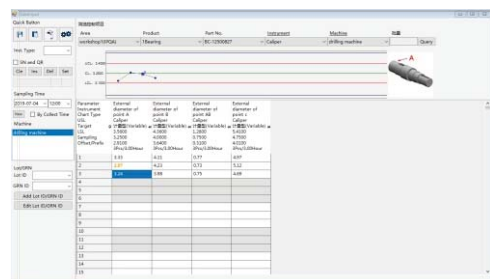


# MEASURING DATA MANAGEMENT SOFTWARE CODE 7316-10



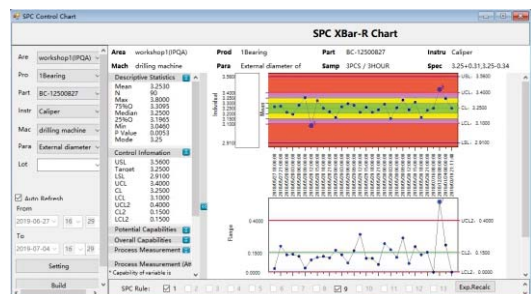
## Direct Transmission

- Transmit data through cables or wireless systems



## Quality Control Chart

- Analyze the tendency of data, make production adjustment in advance



## Data Management

- Measuring data are stored in database

The screenshot displays the "Data Management" interface, showing a table of data for a drilling machine. The table has columns for "Product", "Part No.", "Instrument", and "Data". The data is organized into rows, with each row representing a specific measurement. The interface includes various filters and search options.

## Quality Report

- Generate different EXCEL report formats according to requirements

The screenshot displays the "Quality Report" interface, showing a table of data for a drilling machine. The table has columns for "Product", "Part No.", "Instrument", and "Data". The data is organized into rows, with each row representing a specific measurement. The interface includes various filters and search options.